

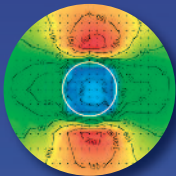
# EMex 10

## Exhibition of Experimental Mechanics



BRITISH SOCIETY FOR  
STRAIN MEASUREMENT

### Wednesday 8 September 2010



The BSSM's Exhibition of Experimental Mechanics (EMex) is the premier UK exhibition for manufacturers and suppliers of strain measurement and stress analysis equipment.

The 2010 exhibition will take place at the Active Learning Laboratory, Department of Engineering, University of Liverpool on Wednesday 8 September 2010, alongside the 7th BSSM International Conference on Advances in Experimental Mechanics 7-9 September 2010.

Exhibition opening times 10.00 to 16.00.

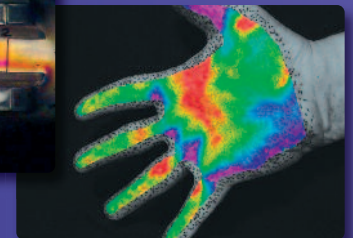
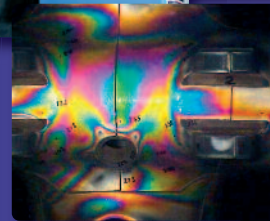
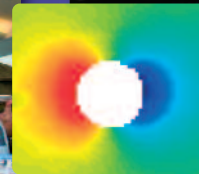
**Entry to EMex is inclusive of lunch and refreshments which will be served in the exhibition room and is free.**

Visitors to the exhibition will be able to see live demonstrations of testing machines, optical techniques for strain analysis and deformation measurement, new sensors and high speed imaging. There will be opportunities to discuss with suppliers and to interact with researchers and industrialists using the equipment. Before lunch there will be a session in the conference programme where short presentations will be provided by some of the exhibitors.

#### Exhibitor list

Exhibitors registered at time of going to press, please visit [www.bssm.org/emex10](http://www.bssm.org/emex10) for a regularly updated list and more information on each exhibitor.

Dantec Dynamics	HBM UK Ltd	GOM
Imetrum	Instron	LaVision
Limess GmbH	Olympus Industrial	
Photron Europe	Techni Measure	Vishay



#### Venue information

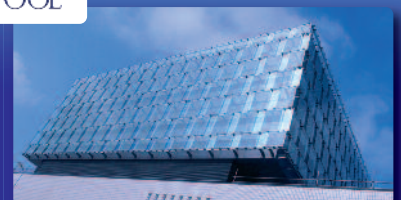
The University of Liverpool is a world leading research university. Its history dates back to 1881 and the establishment of University College Liverpool.



The School of Engineering (formerly known as Department of Engineering) is an acknowledged centre for international-level research in several 21st Century engineering topics and an innovative education centre whose programmes attract students from all over the world.

The new buildings include refurbished laboratories, space for eight research groups and the innovative Active Learning Labs in which 250 students at a time can engage in team and project work.

This is probably the biggest unencumbered active learning space for engineering students anywhere in the world.



For further information please visit  
[www.bssm.org/emex10](http://www.bssm.org/emex10)